

حصص مباشرة

1

حصص مسجلة

2

دورات مكثفة

3

أحصل على بطاقة الإشتراك



- In the future, people will certainly eat more organic food.

⇒ Prediction

100%

- GMFs may cause many health problems.

⇒ 10%

⇒ Many changes will probably occur in our lifestyle.

80%

- Children might study at home using VR.

10%

منصة دروسكم
منصة التعليم الإلكتروني

Expressing Certainty and Doubt.

- In the future, people will certainly eat more organic food. 100%
- GMFs may cause many health problems. 60%
- Many changes will probably occur in our lifestyle. 80%
- Children might study at home using VR. 20%

1. tell the function of each sentence (certainty/ possibility/ probability/ remote possibility)

Sentence (a) expresses ... Certainty \rightarrow 100%

Sentence (b) expresses ... Possibility \rightarrow 60%

Sentence (c) expresses ... Probability \rightarrow 80%

Sentence (d) expresses ... Remote possibility \rightarrow 20%

1 حصص مباشرة

2 حصص مسجلة

3 دورات مكثفة

أحصل على بطاقة الإشتراك





ملف الحصة المباشرة و المسجلة

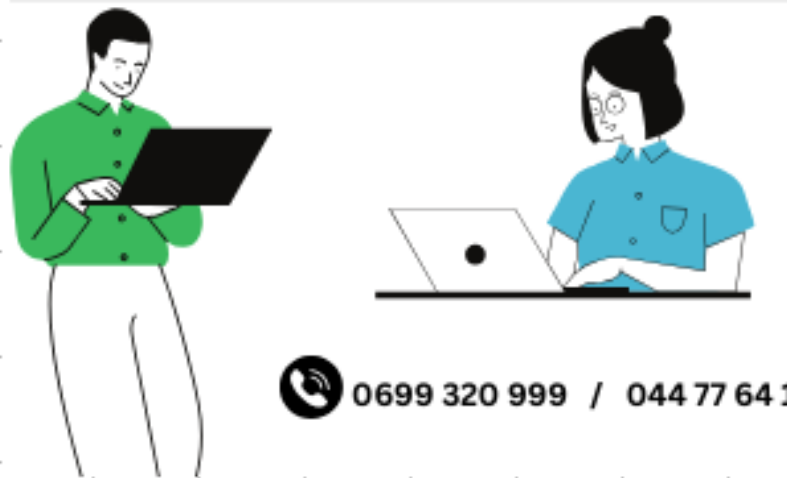
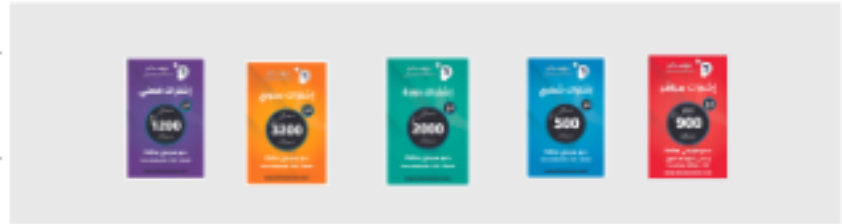


1 حصص مباشرة

2 حصص مسجلة

3 دورات مكثفة

أحصل على بطاقة الإشتراك



$n \Rightarrow \text{Certainty} \Rightarrow 100\%$

$\Rightarrow S + \text{Will} + \text{Certainty} + \text{Stem}$

U.P: } I am sure that

} I am certain absolutely

$S + \text{Will} + \text{Stem}$

$2 \Rightarrow \text{Probability} \Rightarrow 80\%$

$\Rightarrow S + \text{Will} + \text{Probable} + \text{Stem}$

it is Probable that $p S + \text{Will} + \text{Stem}$

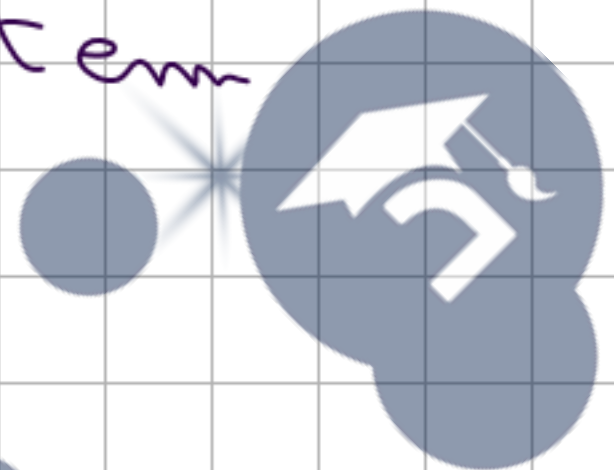
3 => Possibility, "100%"

=> S + "can"
"may" + Stem

∫ - it is possible
will possibly

4 => Remote Possibility 20%

S + might/could + Stem.



منطقة التعليم الإلكتروني
جامعة مصر

⇒ My Parents are certain that

certainty

will be home by 20:00 a clock

b. I will certainly be home !!!

جامعة القاهرة
مكتبة الإلكترونيك

Practice:

Task1: Read the sentences below and say what function they express:

- a. Some consumers think that GMFs food might be harmful... *Remote P.*
- b. Some processed food may contain many contaminants. *Possibility*
- c. Those who are against GMFs will probably win the debate... *Probability*
- d. The consumption of organic food will certainly keep increasing... *Certainty*
- e. GMFs might not disappear ... *Remote Possibility*
- f. Teenagers are absolutely addicted to fast food... *Certainty*

حصص مباشرة

1

حصص مسجلة

2

دورات مكثفة

3

أحصل على بطاقة الإشتراك



Task: Rewrite sentence be so that it means the same as sentence a

a- I'm sure that restaurants will keep emerging.

b- Restaurants will certainly keep emerging

a- It's probable for men to live up to 120 years.

b- Man will probable live up to 120 years.

a- Scientists may well invent flying cars in the future.

b- Scientists can invent flying cars in the future.

a- it is unlikely that businessmen will get
Ride of Advertising.

b- businessmen might get Ride of " " " "

حصص مباشرة

1

حصص مسجلة

2

دورات مكثفة

3

أحصل على بطاقة الإشتراك



Topic: Write a short paragraph predicting how life will look like in 2050.

1. Shopping

people can be replaced by Robots since they can do Multiple things in a second

2. Food

Natural food might be Replaced by Pills or GMF.

3. Entertainment

حصص مباشرة

1

حصص مسجلة

2

دورات مكثفة

3

أحصل على بطاقة الإشتراك



1 حصص مباشرة

2 حصص مسجلة

3 دورات مكثفة

أحصل على بطاقة الإشتراك



Our lifestyles are likely to change dramatically in the coming decades. Because modernity has brought **(led to)** new life styles, we may live a very different life in the coming decades.

To start with, many people nowadays are willing to spend more time shopping in supermarkets and even on the Internet so they become shopaholics. **Hence**, those supermarkets **will probably** be outfitted with fast, effective, and sophisticated robots that will replace shop assistants. They **may** perform the same function as shop assistants and allowing customers to avoid long lines. In addition, we will take less time to eat and go to fast food shops to gulp hamburgers, sandwiches & ships. We **might also** have more conventional products and GMFs that **might** be replaced by food substitutes like pills. **Moreover**, leisure & entertainment will also change due to the development of all sorts of electronic devices. In other term, thanks to DVDs, CDs..., people will not go out for a film, a play or a concert. We will pay even less visits to each other, as the cell phone **will certainly** keep the web-cam (camera) permits us in touch us to watch & see each other with fewer efforts.

To summarize, we can say that scientific and technological progress will certainly make our future lives easier and easier.

دروسكم
منصة التعليم الإلكتروني

ملف الحصة المباشرة و المسجلة

1 حصص مباشرة

2 حصص مسجلة

3 دورات مكثفة

أحصل على بطاقة الإشتراك



Task: Rewrite sentence be so that it means the same as sentence a

e- If the candidates go on foot, they will not arrive early.

f- Unless.....

g- If the students worked hard, they would succeed in BAC.

h- Unless.....

i- He would get fired if he did his work bad.

j- Unless.....

k- Unless you study hardly, you will get bad notes.

l- If.....

m- They will refuse the answer unless you convince them.

n- If

منصة التعليم الإلكتروني
دروسكم



دروسكم
منصة التعليم الإلكتروني

ملف الحصة المباشرة و المسجلة

1 حصص مباشرة

2 حصص مسجلة

3 دورات مكثفة

أحصل على بطاقة الإشتراك



جامعة
البحرين
منطقة التعليم الإلكتروني

